

6803 MULTILEC INDUSTRIAL OIL B-MEG BINALONAN PLANT

*Pangasinan, Philippines
Ingersoll Rand SSR 2000 Air Compressor*



APPLICATION

B-MEG Binalonan Plant uses an Ingersoll Rand SSR 2000 Screw Air Compressor for plant air requirements. The air compressor runs twenty-four hours a day and seven days a week.

AREA OF INTEREST

This air compressor is using a synthetic oil supplied by the distributor of Ingersoll Rand in the Philippines. Engr. Nick Almojera, the Maintenance Supervisor is complaining of the high cost of the oil they are using and he is looking for an alternative oil that can give similar performance or even better but at a lower cost.

LE SOLUTION

In March 2004, Ernie Lunaria of LE Lubricants, Inc. recommended LE 6803 Multilec Industrial Oil. This lubricant is formulated with 100% paraffin base stocks synergistically blended with other additives to reduce downtime, extend drain interval and give the air compressor longer life.

Suite 507 Cityland Shaw Tower.,
Shaw Blvd., Mandaluyong City
Philippines
Tel: (632) 687-3868/69
Fax: (632) 687-3870
Email: info@lelub.com.ph

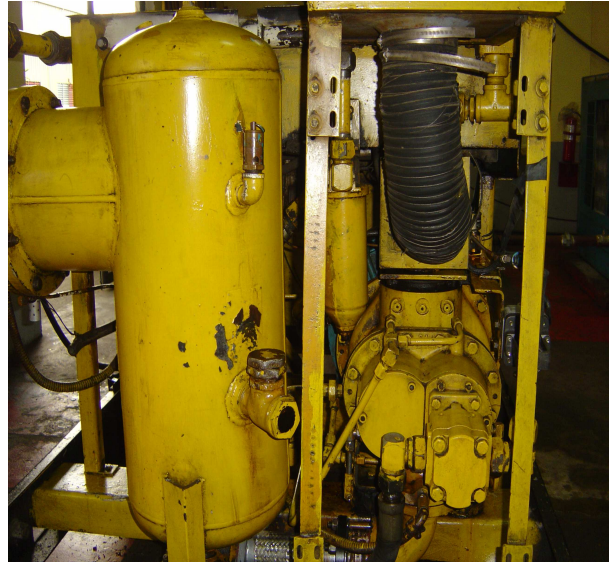
Leaders in Lubricants 

LE LUBRICANTS, INC.

www.lclub.com.ph

www.le-international.com

CUSTOMER TESTIMONIALS



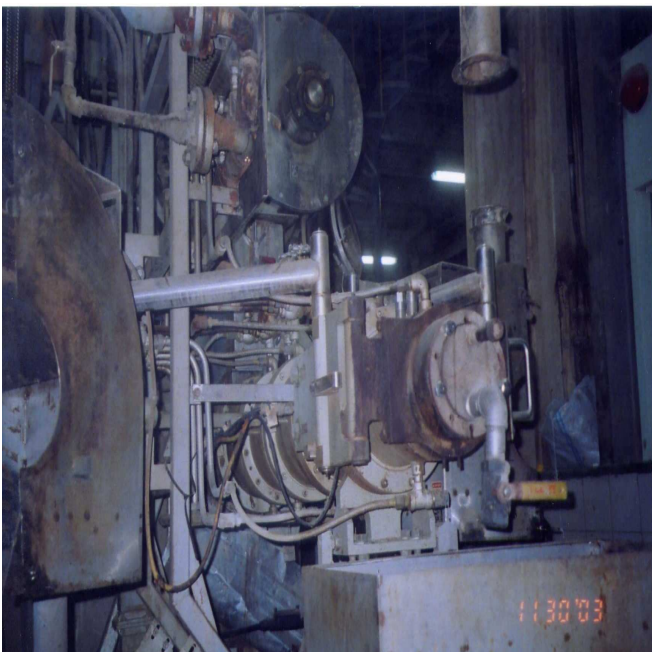
CUSTOMER COST SAVINGS

Upon conversion to LE 6803 Multilec Industrial Oil, B-MEG Pangasinan Plant has a savings of P 6,000.00 (\$ 125.00) per pail. Their average consumption is 10 pails per year. The total savings per year is approximately P 60,000.00 (\$ 1,250.00).

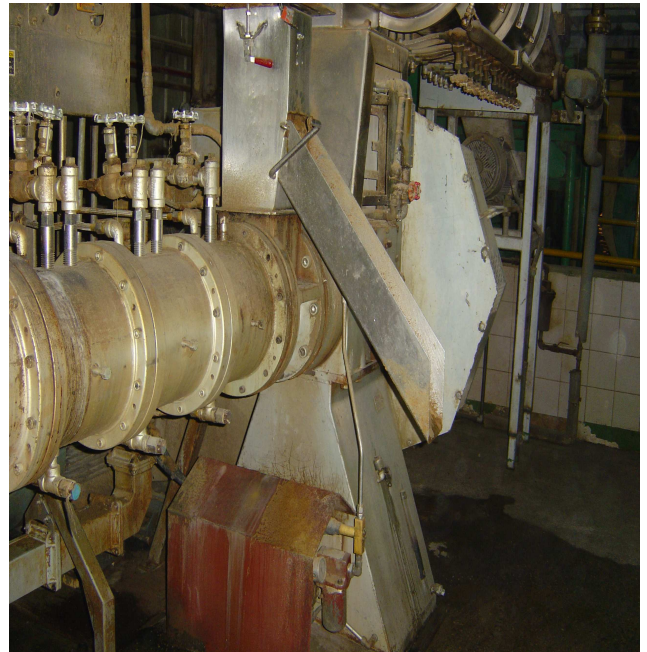
OTHER PRODUCT USED

- LE 609 Almasol Vari Purpose Gear Lubricant - Wenger Extruder Model X-165 Gearbox
- LE 4025 Quinplex Food Machinery Lubricant - Wenger Extruder Bearing Housing
- LE 1250 Almasol High Temperature Grease - Bucket Elevator & California Pellet Mills
- LE 607 Almasol Vari Purpose Gear Lubricant - California Pellet Mill

We would like to thank Engr. Nick Almojera for the information provided to prepare this report.



**WENGER EXTRUDER
MODEL: X 165/32A
SERIAL NO: 12167-1
FEEDER SCREW
GEAR BOX**



**WENGER EXTRUDER
MODEL: X 165/32A
SERIAL NO: 12167-1
BEARING HOUSING**